

# 17" AIS Class B & GNSS Chart Plotter

## Model: HM-5917

Support XINUO-MAP & C-MAP (MAX) Card

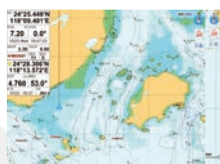
Passed the EU CE certification, China Classification Society CCS type approval



## Features

- ▶ 17 inch Color LCD with 1280 x 1024 resolution, wide angle of view.
- ▶ C-MAP MAX&XINUO-MAP dual chart system, Classic & Practical two menu operation style for selection, users can switch automatically.
- ▶ Built-in Class B AIS module, with perfect AIS function. It can timely respond to regulatory instructions.
- ▶ Intelligent CPA alarm calculation mechanism can avoid outdated and ineffective alarms.
- ▶ Support to making ships being in a group to manage, and can set multiple alarm, such as anchor alarm, leave out alarm, etc.
- ▶ Connect to mobile network to upgrade software and chart data online.
- ▶ Install in intelligent voice to broadcast operation content, alarm content, etc.
- ▶ Support external XINUO remote control keypad, more conveniently for operation.
- ▶ Intelligent brightness adjustment works by encoder button.
- ▶ External speaker supporting improves user experience.

XINUO-MAP



C-MAP



C-MAP (MAX)

Fully satisfy customers' require of electronic chart.



Update XINUO-MAP regularly.

## Multi Display Modes

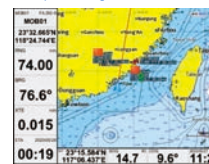
Choose Your Favorite Operating Interface



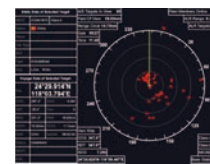
Standard Chart View



Pure Chart View



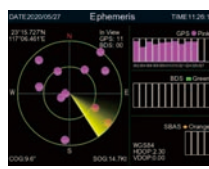
Simple Chart View



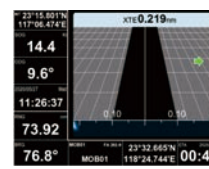
AIS Data



Sailing Data



GNSS



3D Navigation



Compass

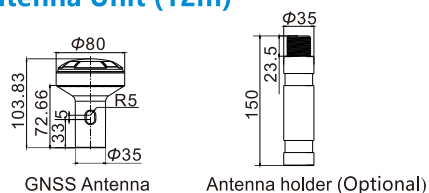
# Specifications

[Unit: mm]

Display Unit	HM-5917
Display Type	Color TFT LCD
Display Size	17 inch
Display Resolution	1280×1024 pixels
Display Brightness	400cd/m <sup>2</sup>
Language	Classic mode: English, Simplified Chinese, Traditional Chinese, Vietnamese
	Utility mode: English, Simplified Chinese, Traditional Chinese, Vietnamese, Malay, Korean, Turkish, Thai, Greek, Indonesian, Japanese, Myanmar, Arabic, Persian, Spanish, French
Display Modes	Classic mode: Standard Chart, GPS data, AIS data, Navigation Chart, Full Chart, 3D Navigation, 3D+Chart, Compass, GNSS
	Utility mode: Standard Chart, Pure Chart, Simple Chart, AIS Data, Sailing Data, GNSS, 3D Navigation, Compass
Memory Capacity	50,000 waypoints, 50,000 markers, 500 routes, one route can indicate 200 waypoints, 1000 tracks, 1,600,000 track points
Interface	AIS Output 1 Ports, NMEA 0183 Output 2 Ports, NMEA 0183 Input 3 Ports (Mutual independent, Baud rate can be set indenpently)
Chart	Classic mode: XINUO-MAP Practical mode: C-MAP (MAX) & XINUO-MAP
WiFi	802.11 b/g/n
Power Supply	DC18V-36V
Power Consumption	18W or less (24 VDC)
Enviromental	
Working Temperature	-15°C~+55°C
Storage Temperature	-20°C~+60°C
Waterproofing	IP65
AIS Class B	
Frequency	156.025MHz ~ 162.025MHz
Bandwidth	25kHz
Modulation	GMSK / FM
Data Rate	9,600 bps
Number of AIS transmitter	1
Number of AIS Receiver	2 (Contains A and B channels)
AIS Channel A(default)	CH87B(161.975MHz)
AIS Channel B(default)	CH88B(162.025MHz)
TX Power Output	2 W
RX Sensivity	< -107 dBm @ 20% PER
Standards	
IEC 62287-1, IEC 61108-1, IEC 61162-1, IEC 60945, ITU-R M.1371-5, IMO Resolution A.694(17)	

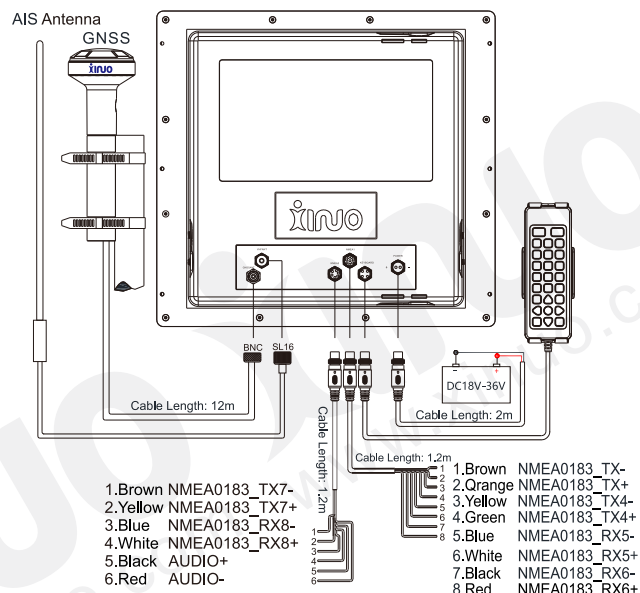
Packing List			
Name	Quantity	Name	Quantity
Display	1	8-Pin Data Line (1.2m)	1
Bracket	1	6-Pin Data Line (1.2m)	1
M8 Knob	2	GNSS Antenna	1
M6 Knob	2	ST4.8*20 Screw	4
Rubber Gasket For M8 Knob	4	Remote Control	1
Rubber Gasket For M6 Knob	4	Remote Control Stand	1
Power Cable (2m)	1	Quick Reference	1

## » GNSS Antenna Unit (12m)



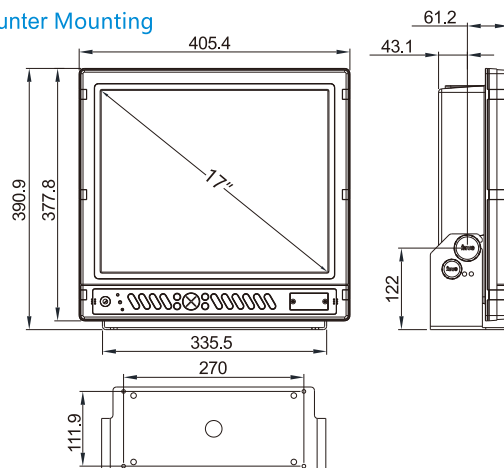
GNSS	
GNSS Receiver	72 channels
Receive Frequency	GPS L1 1575.42MHz, BDS B1 1561.098MHz
Accuracy	GPS&BDS 2.5m (CEP50% open sky)
	GPS 5m (CEP50% open sky)
	BDS 5m (CEP50% open sky)
Speed Accuracy	0.1m/s (50%@10m/s)
Time to First Fix	Cold Start<30s, Hot Start<1s

## » System Connection Diagram and Serial Port Definition

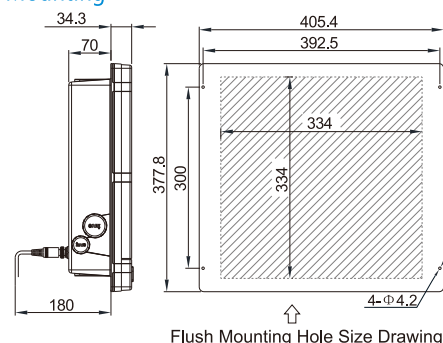


## » Main Unit

### Counter Mounting



### Flush Mounting



Dealer:



WWW.XINUO.COM

Xinuo Information Technology (Xiamen) Corporation Limited