

# Marine GNSS Chart Plotter

**Model: XF-808**

**Support Internal Chart & C-MAP (MAX) Card**



## Features

- ▶ Passed the EU CE certification.
- ▶ 8 inch color LCD with 800 x 480 resolution, high brightness, wide angle of view.
- ▶ Support Internal Chart and C-MAP(MAX) dual chart system.
- ▶ Classic & Utility dual operating system, you can switch freely.
- ▶ Built-in BDS, GPS dual-mode high-precision positioning module, the position information is stable and reliable.
- ▶ Support multi-language display, such as Chinese, English, Korean, etc.
- ▶ Many display pages can be chose and switched freely.
- ▶ Connect to mobile network to upgrade software online.
- ▶ Install in intelligent voice to broadcast operation content, alarm content, etc.

Internal Chart



C-MAP (MAX)



### Multi Display Modes

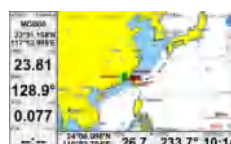
Choose Your Favorite Operating Interface



Standard Chart View



Pure Chart View



Simple Chart View



AIS Data



Sailing Data



GNSS



3D Navigation



Compass

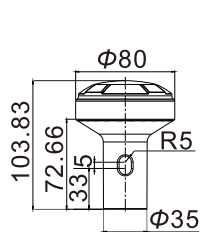
# Specifications

[Unit: mm]

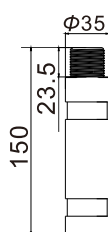
Display Unit	XF-808
Display Type	Color TFT LCD
Display Size	8 inch
Display Resolution	800×480 pixels
Display Brightness	450cd/m <sup>2</sup>
Language	Classic mode: English, Simplified Chinese, Traditional Chinese, Vietnamese Utility mode: English, Simplified Chinese, Traditional Chinese, Vietnamese, Malay, Korean, Turkish, Thai, Greek, Indonesian, Japanese, Myanmar, Arabic, Persian, Spanish, French
Display Modes	Classic mode: Standard Chart, GPS data, AIS data, Navigation Chart, Full Chart, 3D Navigation, 3D+Chart, Compass, GNSS Utility mode: Standard Chart, Pure Chart, Simple Chart, AIS Data, Sailing Data, GNSS, 3D Navigation, Compass
Memory Capacity	50,000 waypoints, 50,000 markers, 500 routes, one route can indicate 200 waypoints, 1000 tracks, 1,600,000 track points
Interface	NMEA 0183 Output 2 Ports, NME A0183 Input 2 Ports (Baud rate can be set indenptently)
WiFi	802.11 b/g/n
Power Supply	DC10V-36V
Power Consumption	8W or less (24 VDC)
Enviromental	
Working Temperature	-15°C~ +55°C
Storage Temperature	-20°C~ +60°C
Waterproofing	IP65
GNSS	
GNSS Receiver	72 channels
Receive Frequency	GPS L1 1575.42MHz, BDS B1 1561.098MHz
Accuracy	GPS&BDS 2.5m (CEP50% open sky) GPS 5m (CEP50% open sky) BDS 5m (CEP50% open sky)
Speed Accuracy	0.1m/s (50%@10m/s)
Time to First Fix	Cold Start<30s, Hot Start<1s
Standards	IMO Resolution A.694(17), IMO MSC 112(73), IEC 61108-1, IEC 61162-1, IEC 60945

Packing List			
Name	Quantity	Name	Quantity
Display	1	Large Knob	2
Bracket	1	Rubber Gasket	4
Power Cable (2m)	1	3*20 Screw	2
Data Cable (1.2m)	1	4.8*20 Screw	4
GNSS Antenna(8m)	1	Quick Reference	1

## » GNSS Antenna Unit (8m)

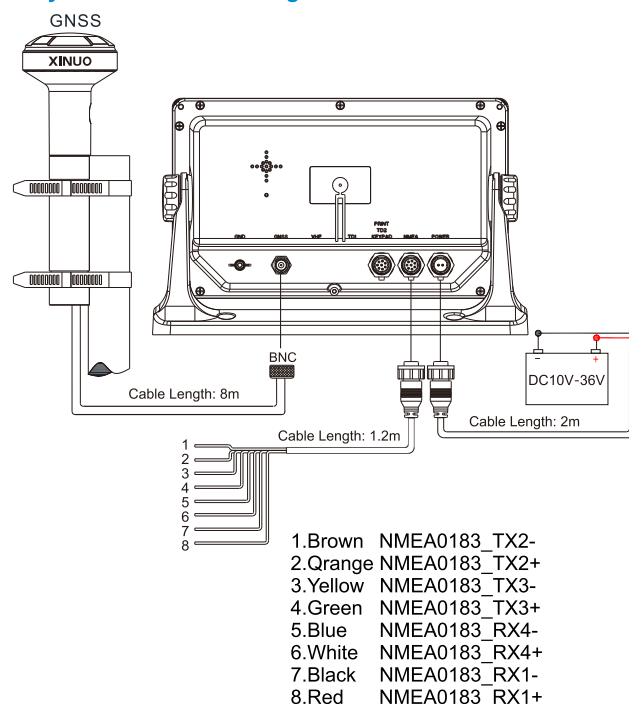


GNSS Antenna



Antenna Holder (Optional)

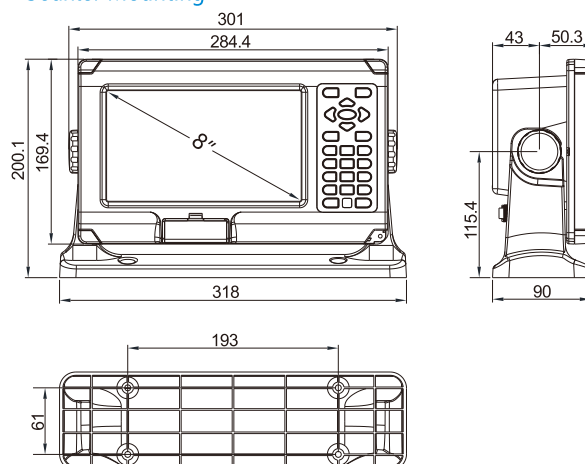
## » System Connection Diagram and Serial Port Definition



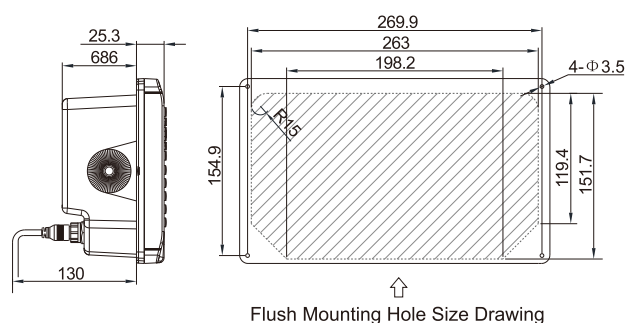
## » Main Unit

Weight: 1.6kg, 3.53lb

### Counter Mounting



### Flush Mounting



Flush Mounting Hole Size Drawing

**XINUO**

**Xinuo Information Technology (Xiamen) Corporation Limited**

Address: Unit 2001, 1 Chengyi North Street (B04), Software Park III, Xiamen, China

Tel: +86-592-3300300

Fax: +86-592-3300310

Hotline: 400-8868-592

Web: <http://www.xinuo.com>

Email: [info@xinuo.com](mailto:info@xinuo.com)



NEEQ:836189