

# 15" AIS Class B & GNSS Chart Plotter

**Model: HM-5915**

**Support Internal Chart & C-MAP (MAX) Card**



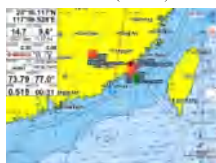
## Features

- ▶ Passed the EU CE certification.
- ▶ 15 inch color LCD with 1024 x 768 resolution, wide angle of view.
- ▶ Support Internal Chart and C-MAP(MAX) dual chart system, Classic & Practical two menu operation style for selection, users can switch automatically.
- ▶ Built-in Class B AIS module, with perfect AIS function. It can timely respond to regulatory instructions.
- ▶ Intelligent CPA alarm calculation mechanism can avoid outdated and ineffective alarms.
- ▶ Support to making ships being in a group to manage, and can set multiple alarm, such as anchor alarm, leave out alarm, etc.
- ▶ Connect to mobile network to upgrade software online.
- ▶ Install in intelligent voice to broadcast operation content, alarm content, etc.
- ▶ Support external XINUO remote-control keypad, more convenient and efficient.
- ▶ Intelligent brightness adjustment works by encoder button.
- ▶ Extenal speaker supporting improves user experience.

Internal Chart



C-MAP(MAX)



## Multi Display Modes

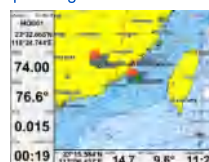
Choose Your Favorite Operating Interface



Standard Chart View



Pure Chart View



Simple Chart View



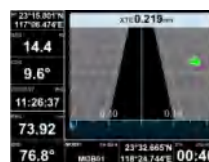
AIS Data



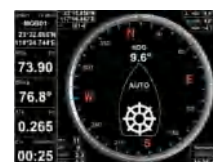
Sailing Data



GNSS



3D Navigation



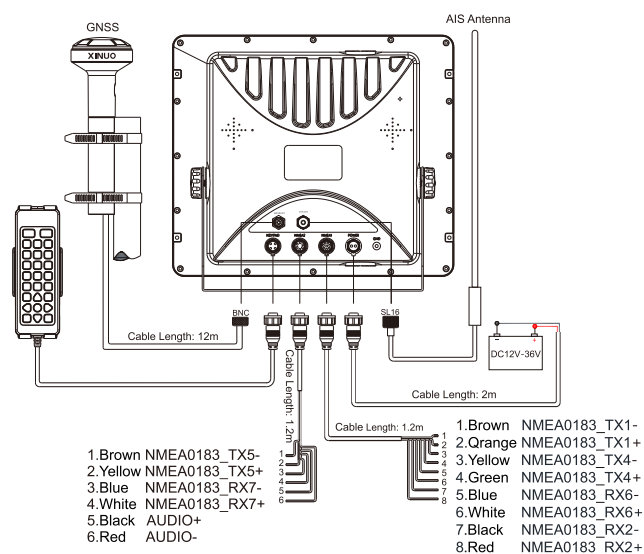
Compass

# Specifications

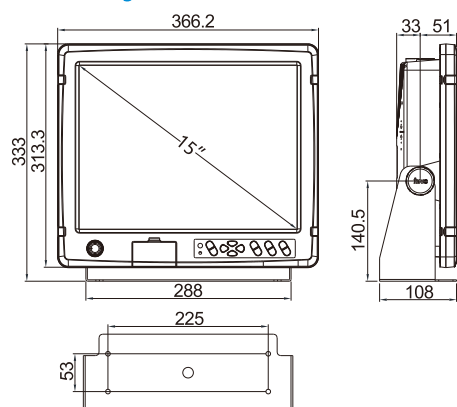
[Unit: mm]

Display Unit	HM-5915
Display Type	Color TFT LCD
Display Size	15 inch
Display Resolution	1024×768 pixels
Display Brightness	450cd/m <sup>2</sup>
Language	Classic mode: English, Simplified Chinese, Traditional Chinese, Vietnamese Utility mode: English, Simplified Chinese, Traditional Chinese, Vietnamese, Malay, Korean, Turkish, Thai, Greek, Indonesian, Japanese, Myanmar, Arabic, Persian, Spanish, French
Display Modes	Classic mode: Standard Chart, GPS data, AIS data, Navigation Chart, Full Chart, 3D Navigation, 3D+Chart, Compass, GNSS Utility mode: Standard Chart, Pure Chart, Simple Chart, AIS Data, Sailing Data, GNSS, 3D Navigation, Compass
Memory Capacity	50,000 waypoints, 50,000 markers, 500 routes, one route can indicate 200 waypoints, 1000 tracks, 1,600,000 track points
Interface	AIS Output 1 Ports, NMEA 0183 Output 2 Ports, NMEA 0183 Input 3 Ports (Mutual independent, Baud rate can be set indenptently)
WiFi	802.11 b/g/n
Power Supply	DC12V~36V
Power Consumption	16W or less (24 VDC)
Enviromental	
Working Temperature	-15°C~+55°C
Storage Temperature	-20°C~+60°C
Waterproofing	IP65
AIS Class B	
Frequency	156.025MHz ~ 162.025MHz
Bandwidth	25kHz
Modulation	GMSK / FM
Data Rate	9,600 bps
Number of AIS transmitter	1
Number of AIS Receiver	2 (Contains A and B channels)
AIS Channel A(default)	CH87B(161.975MHz)
AIS Channel B(default)	CH88B(162.025MHz)
TX Power Output	2 W
RX Sensivity	< -107 dBm @ 20% PER
GNSS	
GNSS Receiver	72 channels
Receive Frequency	GPS L1 1575.42MHz, BDS B1 1561.098MHz
Accuracy	GPS&BDS 2.5m (CEP50% open sky)
	GPS 5m (CEP50% open sky)
	BDS 5m (CEP50% open sky)
Speed Accuracy	0.1m/s (50%@10m/s)
Time to First Fix	Cold Start<30s, Hot Start<1s
Standards	IEC 62287-1, IEC 61108-1, IEC 61162-1, IEC 60945, ITU-R M.1371-5, IMO Resolution A.694(17)

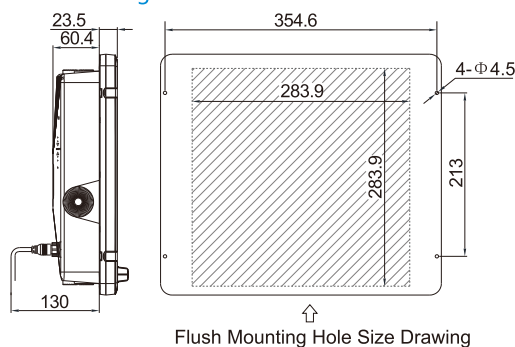
## System Connection Diagram and Serial Port Definition



## Main Unit Counter Mounting



## Flush Mounting

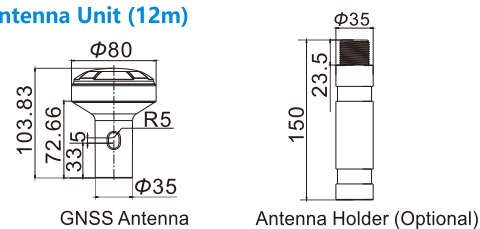


Flush Mounting Hole Size Drawing

## Packing List

Name	Quantity	Name	Quantity
Display	1	Rubber Gasket For M8 Knob	2
Bracket	1	4.2*20 Screw	4
Power Cable (2m)	1	Remote Control	1
8-Pin Data Cable (1.2m)	1	Remote Control Bracket	1
6-Pin Data Cable (1.2m)	1	4.8*20 Screw	4
GNSS Antenna(12m)	1	Quick Reference	1
M8 Knob	2		

## GNSS Antenna Unit (12m)



**XINUO**

**Xinuo Information Technology (Xiamen) Corporation Limited**

Address: Unit 2001, 1 Chengyi North Street (B04), Software Park III, Xiamen, China

Tel: +86-592-3300300

Fax: +86-592-3300310

Hotline: 400-8868-592

Web: <http://www.xinuo.com>

Email: [info@xinuo.com](mailto:info@xinuo.com)



NEEQ:836189