

10.4" AIS Class B & GNSS Chart Plotter

Model: XF-1069B

Support Internal Chart & C-MAP (MAX) Card

Passed the EU CE certification



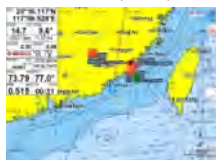
Features

- ▶ 10.4 inch color LCD with 800 x 600 resolution, wide angle of view.
- ▶ Support Internal Chart and C-MAP(MAX) dual chart system, Classic & Utility dual operating system, you can switch freely.
- ▶ Built-in Class B AIS module, with perfect AIS function. It can timely respond to regulatory instructions.
- ▶ Intelligent CPA alarm calculation mechanism can avoid outdated and ineffective alarms.
- ▶ Support to making ships being in a group to manage, and can set multiple alarm, such as anchor alarm, leave out alarm, etc.
- ▶ Connect to mobile network to upgrade software online.
- ▶ Install in intelligent voice to broadcast operation content, alarm content, etc.
- ▶ Designed for counter mounting, flush mounting and other installation methods.

Internal Chart



C-MAP(MAX)



Multi Display Modes

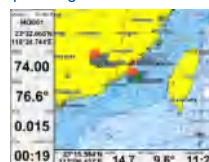
Choose Your Favorite Operating Interface



Standard Chart View



Pure Chart View



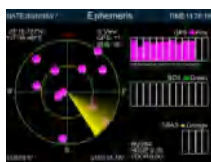
Simple Chart View



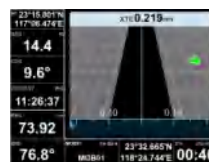
AIS Data



Sailing Data



GNSS



3D Navigation



Compass

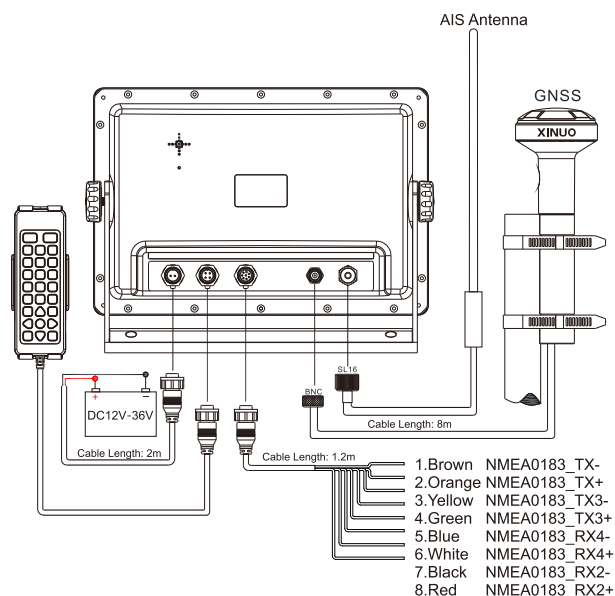
Specifications

[Unit: mm]

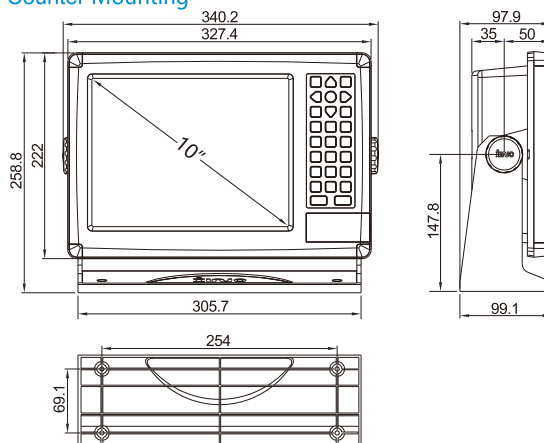
Display Unit	XF-1069B
Display Type	Color TFT LCD
Display Size	10.4 inch
Display Resolution	800×600 pixels
Display Brightness	300cd/m ²
Language	Classic mode: English, Simplified Chinese, Traditional Chinese, Vietnamese Utility mode: English, Simplified Chinese, Traditional Chinese, Vietnamese, Malay, Korean, Turkish, Thai, Greek, Indonesian, Japanese, Myanmar, Arabic, Persian, Spanish, French
Display Modes	Classic mode: Standard Chart, GPS data, AIS data, Navigation Chart, Full Chart, 3D Navigation, 3D+Chart, Compass, GNSS Utility mode: Standard Chart, Pure Chart, Simple Chart, AIS Data, Sailing Data, GNSS, 3D Navigation, Compass
Memory Capacity	50,000 waypoints, 50,000 markers, 500 routes, one route can indicate 200 waypoints, 1000 tracks, 1,600,000 track points
Interface	AIS Output 1 Ports, NMEA 0183 Output 2 Ports, NMEA 0183 Input 3 Ports (Mutual independent, Baud rate can be set independently)
WiFi	802.11 b/g/n
Power Supply	DC12V~36V
Power Consumption	11W or less (24 VDC)
Enviromental	
Working Temperature	-15°C~+55°C
Storage Temperature	-20°C~+60°C
Waterproofing	IP65
AIS Class B	
Frequency	156.025MHz ~ 162.025MHz
Bandwidth	25kHz
Modulation	GMSK / FM
Data Rate	9,600 bps
Number of AIS transmitter	1
Number of AIS Receiver	2 (Contains A and B channels)
AIS Channel A(default)	CH87B(161.975MHz)
AIS Channel B(default)	CH88B(162.025MHz)
TX Power Output	2 W
RX Sensivity	< -107 dBm @ 20% PER
GNSS	
GNSS Receiver	72 channels
Receive Frequency	GPS L1 1575.42MHz, BDS B1 1561.098MHz
Accuracy	GPS&BDS 2.5m (CEP50% open sky) GPS 5m (CEP50% open sky) BDS 5m (CEP50% open sky)
Speed Accuracy	0.1m/s (50%@10m/s)
Time to First Fix	Cold Start<30s, Hot Start<1s
Standards	IEC 62287-1, IEC 61108-1, IEC 61162-1, IEC 60945, ITU-R M.1371-5, IMO Resolution A.694(17)

Packing List			
Name	Quantity	Name	Quantity
Display	1	Large Knob	2
Bracket	1	Rubber Gasket	4
Power Cable (2m)	1	3*20 Screw	4
Data Cable (1.2m)	1	4.2*20 Screw	4
GNSS Antenna(8m)	1	Quick Reference	1

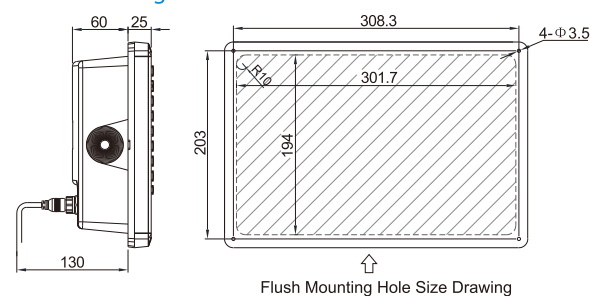
System Connection Diagram and Serial Port Definition



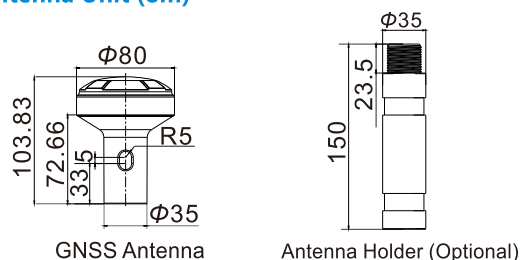
Main Unit Counter Mounting



Flush Mounting



GNSS Antenna Unit (8m)



XINUO

Xinuo Information Technology (Xiamen) Corporation Limited

Address: Unit 2001, 1 Chengyi North Street (B04), Software Park III, Xiamen, China

Tel: +86-592-3300300

Fax: +86-592-3300310

Hotline: 400-8868-592

Web: <http://www.xinuo.com>

Email: info@xinuo.com



NEEQ:836189