

12" Marine GNSS Chart Plotter

Model: HM-1512

Support Internal Chart & C-MAP (MAX) Card



Features

- ▶ Passed the EU CE certification.
- ▶ 12.1 inch color LCD with 800 x 600 resolution, wide angle of view.
- ▶ Support Internal Chart and C-MAP(MAX) dual chart system.
- ▶ Classic & Utility dual operating system, you can switch freely.
- ▶ Built-in BDS, GPS dual-mode high-precision positioning module, the position information is stable and reliable.
- ▶ Support multi-language display, such as Chinese, English, Korean, etc.
- ▶ Many display pages can be chose and switched freely.
- ▶ Support external XINUO remote-control keypad, more convenient and efficient.
- ▶ Connect to mobile network to upgrade software and charts online.
- ▶ Install in intelligent voice to broadcast operation content, alarm content, etc.

Internal Chart



C-MAP (MAX)

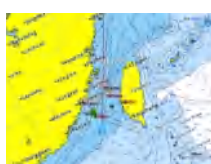


Multi Display Modes

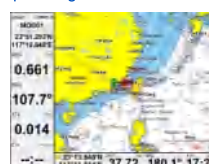
Choose Your Favorite Operating Interface



Standard Chart View



Pure Chart View



Simple Chart View



AIS Data



Sailing Data



GNSS



3D Navigation



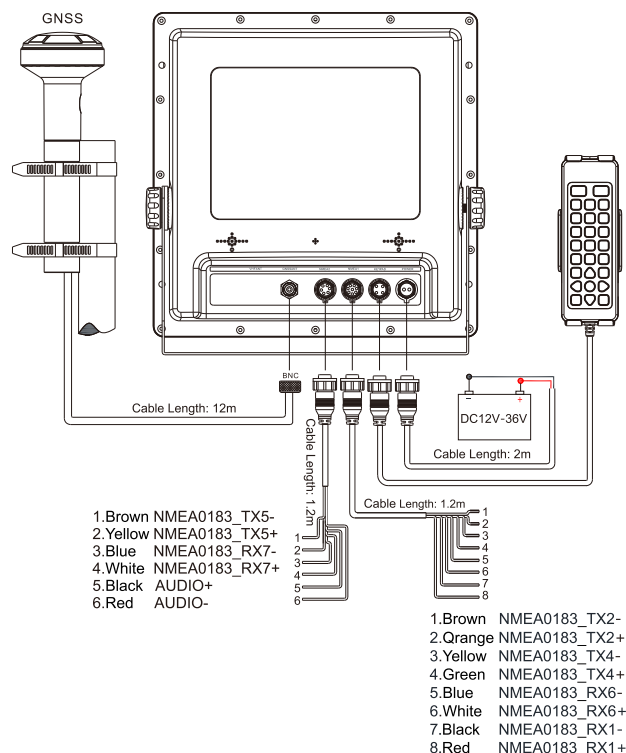
Compass

Specifications

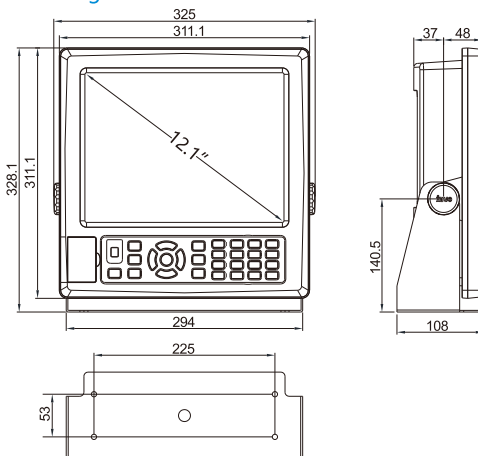
[Unit: mm]

Display Unit		HM-1512
Display Type		Color TFT LCD
Display Size		12.1 inch
Display Resolution		800×600 pixels
Display Brightness		450cd/m²
Language		Classic mode: English, Simplified Chinese, Traditional Chinese, Vietnamese
		Utility mode: English, Simplified Chinese, Traditional Chinese, Vietnamese, Malay, Korean, Turkish, Thai, Greek, Indonesian, Japanese, Myanmar, Arabic, Persian, Spanish, French
Display Modes		Classic mode: Standard Chart, GPS data, AIS data, Navigation Chart, Full Chart, 3D Navigation, 3D+Chart, Compass, GNSS
		Utility mode: Standard Chart, Pure Chart, Simple Chart, AIS Data, Sailing Data , GNSS, 3D Navigation, Compass
Memory Capacity		50,000 waypoints, 50,000 markers, 500 routes, one route can indicate 200 waypoints , 1000 tracks, 1,600,000 track points
Interface		NMEA 0183 Output 3 Ports, NMEA 0183 Input 3 Ports (Baud rate can be set indenptently)
WiFi		802.11 b/g/n
Power Supply		DC12V-36V
Power Consumption		11W or less (24 VDC)
Enviromental		
Working Temperature		-15°C～ +55°C
Storage Temperature		-20°C～ +60°C
Waterproofing		IP65
GNSS		
GNSS Receiver		72 channels
Receive Frequency		GPS L1 1575.42MHz, BDS B1 1561.098MHz
Accuracy	GPS&BDS	2.5m (CEP50% open sky)
	GPS	5m (CEP50% open sky)
	BDS	5m (CEP50% open sky)
Speed Accuracy		0.1m/s (50%@10m/s)
Time to First Fix		Cold Start<30s, Hot Start<1s
Standards		IMO Resolution A.694(17) , IMO MSC 112(73), IEC 61108-1, IEC 61162-1, IEC 60945

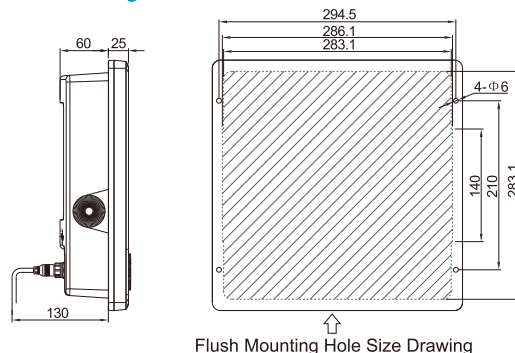
» System Connection Diagram and Serial Port Definition



» Main Unit Counter Mounting



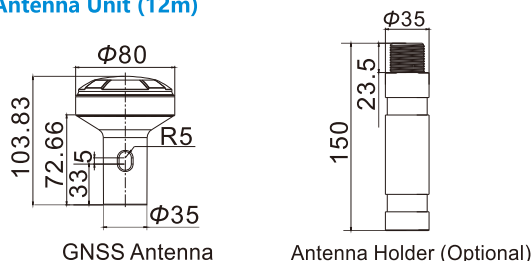
Flush Mounting



Packing List

Name	Quantity	Name	Quantity
Display	1	Rubber Gasket For M8 Knob	2
Bracket	1	4.2*20 Screw	4
Power Cable (2m)	1	Remote Control	1
8-Pin Data Cable (1.2m)	1	Remote Control Bracket	1
6-Pin Data Cable (1.2m)	1	4.8*20 Screw	4
GNSS Antenna(12m)	1	Quick Reference	1
M8 Knob	2		

» GNSS Antenna Unit (12m)



XINUO

Xinuo Information Technology (Xiamen) Corporation Limited

Address: Unit 2001, 1 Chengyi North Street (B04), Software Park III, Xiamen, China

Tel: +86-592-3300300

Fax: +86-592-3300310

Hotline: 400-8868-592

Web: <http://www.xinuo.com>

Email: info@xinuo.com



NEEQ:836189