

RCS9062

RCS Series Radar Navigation System

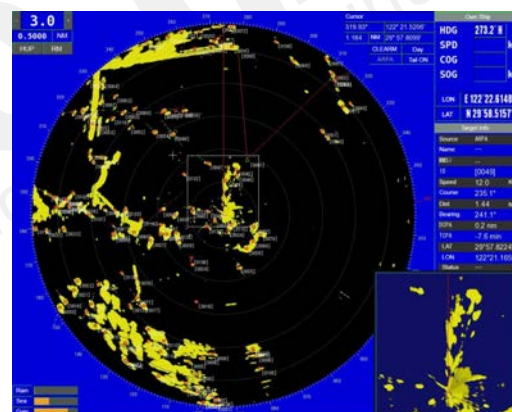


RCS9062 radar navigation system consists of 1.8m antenna, 12KW transmit power scanner unit and 19" display. It is suitable for ships less than 10,000 tons. The radar adopts the innovative technical of our team in the field of microwave, electronics, computer, etc. It has excellent performance in sea-clutter suppression, rain-snow suppression, target tracking, target azimuth and distance monitor.

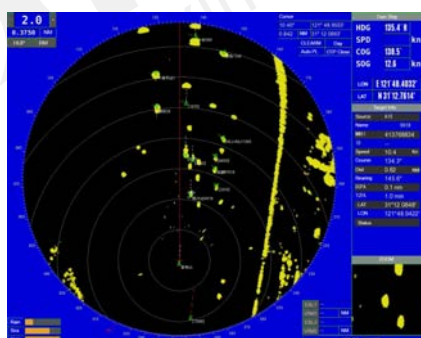
Main features

- ◆ Passed the China Classification Society CCS type approval.
- ◆ 1280×1024 display with high resolution.
- ◆ ARPA automatic tracking function, provide multi-target TT (ARPA) information and AIS information.
- ◆ Stable indication and reliable acquisition of small target.
- ◆ Use rotary knob easily to adjust gain, anti-sea clutter, anti-rain clutter, etc.
- ◆ Automatic image adjustment.
- ◆ Simple plotting function allows users to draw fairways and fishing nets on radar.

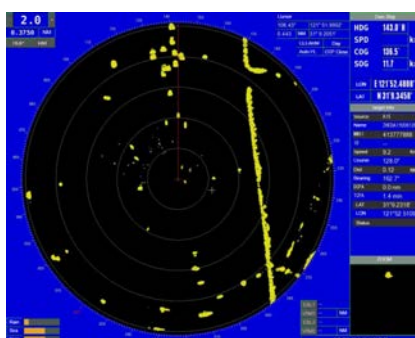
Based on data mining algorithm to realize ARPA automatic tracking, capture and the calculation of target's SOG, COG, CPA.



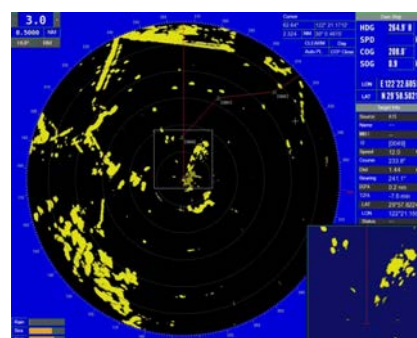
AIS and radar echo data can overlay display.



Advanced wave and snow suppression algorithm to achieve long-distant small target detection, the image is clearer.



High definition of central amplifier image, dual range display on the same screen.



Antenna	AT120	AT180
Antenna Type	X-band	
length of Antenna	1.2m	1.8m
Horizontal Beam Width	0.9°~ 1.3° (±0.1°)	
Vertical Beam Width	20°~28°	
Within 10° Sidelobe	-24dB~-22dB	
Beyond 10° Sidelobe	-30dB	
Gain	28dB~31dB	

Scanner Unit	
Working Frequency	9410 MHz ±30 MHz
Peak Power	12KW
Pulse Width	0.8
Repetition Rate	1000
IF Amplifier	60 MHz
IFBW	8 MHz
Noise Figure	< 6 dB
STC Attenuation Range	0dB-40dB
Resolution	Range resolution 25m (under 0.75nm)
	Angular resolution 2.1° (under 1.5nm)
Waterproof	IP56

Display Unit	
Display	19 inch
Display Resolution	1280x1024
Range	0.125nm ~ 96nm
Waterproof	IP55
EBL	2
VRM	2
Warning Circle	2
Sport Mode	Display mode, North up, head-up Exercise mode, True motion, relative motion
Function	ARPA function
Interface	Integrated GPS module (limited model), AIS interface, compass interface, sounder /GPS interface
Power Supply	DC 18V ~ 36V
Power	150W ~ 300W

Radar Antenna

