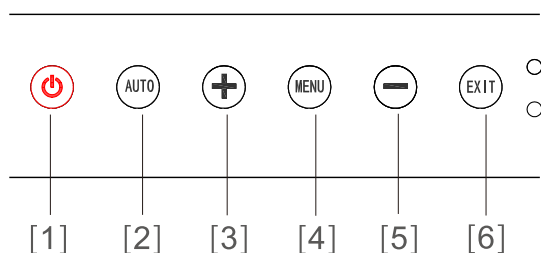


Marine Color LCD Monitor

Model: HM-2626



Keypad Functions



- [1] **[Power] key**: To turn ON/OFF the monitor, but the core board still working.
- [2] **[AUTO] key**: Automatically adjust to the center display; or return to the previous menu.
- [3] **[+] key**: Menu to move up, adjust the volume or adjust brightness.
- [4] **[MENU] key**: See the details behind.
- [5] **[-] key**: Menu down, adjust the volume or adjust brightness.
- [6] **[EXIT] key**: Exit from current menu, or back to the previous menu.

Features

- ▶ LED backlight with a higher brightness and wide angle of view, 1920×1080(FHD) resolution.
- ▶ Support multi-language.
- ▶ Support VGA, DVI, HDMI interface.
- ▶ Use knob to adjust brightness, it is more convenient to operate.
- ▶ Support countertop and flush instal.



Specifications

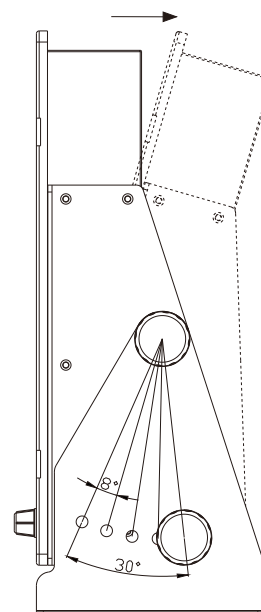
[Unit: mm]

Display Unit	HM-2626
Display Type	Color TFT LCD
Screen Size	27 inch(597.6mm×336.15mm)
Display Resolution	1920×1080(FHD) pixels
Colors	16.7M
Screen Brightness	500cd/m ²
Viewing Angle	Horizontal: 178° Vertical: 178°
Contrast Ratio	3000:1
Video Input	VGA; DVI; HDMI
Operating Temperature	-15°C~ +55°C
Storage Temperature	-20°C~ +60°C
Power Supply	AC110V/AC220V
Compatible Resolution	1920*1080;1600*900; 1366*768; 1280*720...
Menu Language	English,Simplified Chinese,German,Italian, French,Spanish,Portuguese,Korean
Standards	IEC 60950-1; ETSI EN 301 489-3 V1.4.1; IEC 60529; ETSI EN 300 440-2 V1.4.1; ETSI EN 300 440-1 V1.6.1

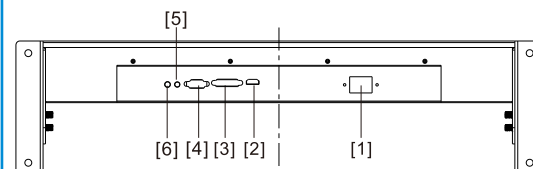
Packing List

Main Unit×1set	Power Cable ×1 pc
VGA Cable ×1 pc	User's Manual ×1 pc
Mounting Bracket×2pcs	Wood Screw ×4 pcs
Mounting Bracket Screw (L) x 2 sets	
Mounting Bracket Screw (S) x 2 sets	

» Perspective Adjustment

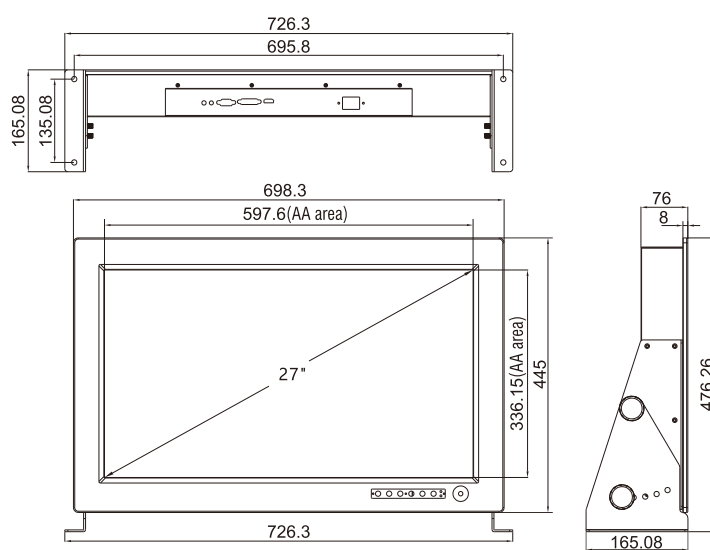


» Interface Definition



[1] POWER [2] HDMI [3] DVI [4] VGA
[5] AUDIO INPUT [6] AUDIO OUTPUT

» Display Unit Counter Mounting



Flush Mounting

