

15" Marine GNSS Chart Plotter

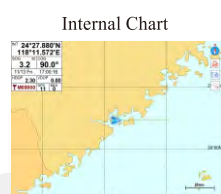
Model: HM-1815

Support Internal Chart & C-MAP (MAX) Card

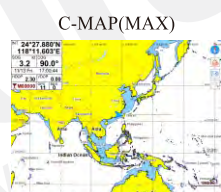


Features

- ▶ Passed the EU CE certification.
- ▶ 15 inch color LCD with 1024 x 768 resolution, wide angle of view.
- ▶ Support Internal Chart and C-MAP(MAX) dual chart system.
- ▶ Classic& Utility dual operating system, you can switch freely.
- ▶ Built-in BDS, GPS dual-mode high-precision positioning module, the position information is stable and reliable.
- ▶ Support multi-language display, such as Chinese, English, Korean, etc.
- ▶ Many display pages can be chose and switched freely.
- ▶ Support external XINUO remote-control keypad, more convenient and efficient.
- ▶ Connect to mobile network to upgrade software online.
- ▶ Install in intelligent voice to broadcast operation content, alarm content, etc.



Internal Chart



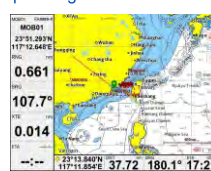
C-MAP(MAX)



Standard Chart View



Pure Chart View



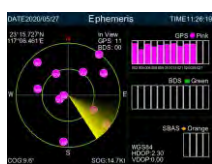
Simple Chart View



AIS Data



Sailing Data



GNSS



3D Navigation



Compass

Multi Display Modes

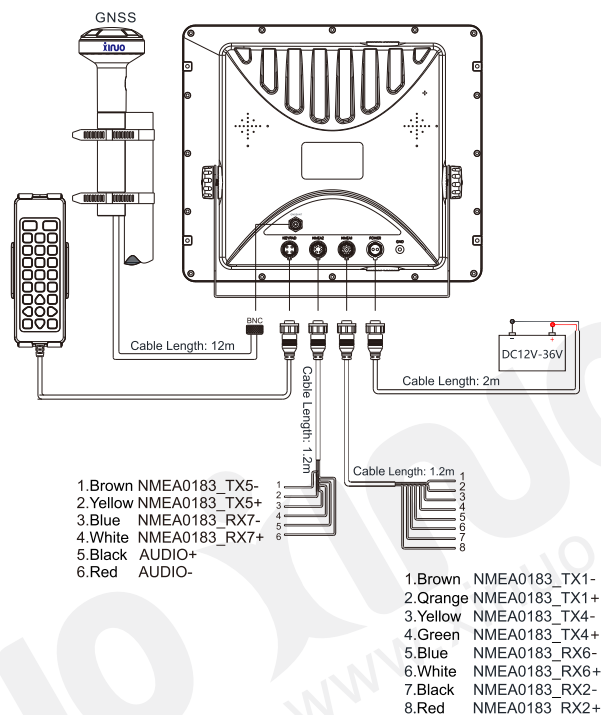
Choose Your Favorite Operating Interface

Specifications

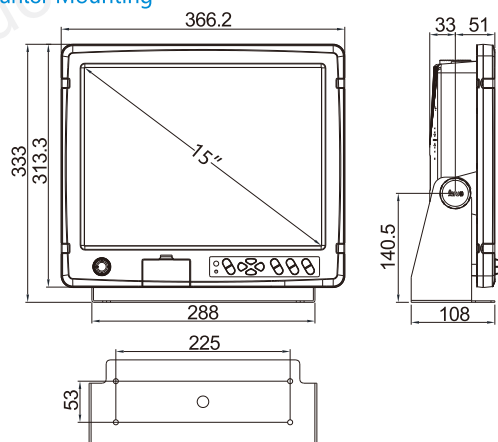
[Unit: mm]

Display Unit	HM-1815
Display Type	Color TFT LCD
Display Size	15 inch
Display Resolution	1024×768 pixels
Display Brightness	450cd/m ²
Language	Classic mode: English, Simplified Chinese, Traditional Chinese, Vietnamese Utility mode: English, Simplified Chinese, Traditional Chinese, Vietnamese, Malay, Korean, Turkish, Thai, Greek, Indonesian, Japanese, Myanmar, Arabic, Persian, Spanish, French
Display Modes	Classic mode: Standard Chart, GPS data, AIS data, Navigation Chart, Full Chart, 3D Navigation, 3D+Chart, Compass, GNSS Utility mode: Standard Chart, Pure Chart, Simple Chart, AIS Data, Sailing Data, GNSS, 3D Navigation, Compass
Memory Capacity	50,000 waypoints, 50,000 markers, 500 routes, one route can indicate 200 waypoints, 1000 tracks, 1,600,000 track points
Interface	NMEA 0183 Output 3 Ports, NMEA 0183 Input 3 Ports (Baud rate can be set indenptently)
WiFi	802.11 b/g/n
Power Supply	DC12V-36V
Power Consumption	12W or less (24 VDC)
Enviromental	
Working Temperature	-15°C~ +55°C
Storage Temperature	-20°C~ +60°C
Waterproofing	IP65
GNSS	
GNSS Receiver	72 channels
Receive Frequency	GPS L1 1575.42MHz, BDS B1 1561.098MHz
Accuracy	GPS&BDS 2.5m (CEP50% open sky) GPS 5m (CEP50% open sky) BDS 5m (CEP50% open sky)
Speed Accuracy	0.1m/s (50%@10m/s)
Time to First Fix	Cold Start<30s, Hot Start<1s
Standards	IMO Resolution A.694(17), IMO MSC 112(73), IEC 61108-1, IEC 61162-1, IEC 60945

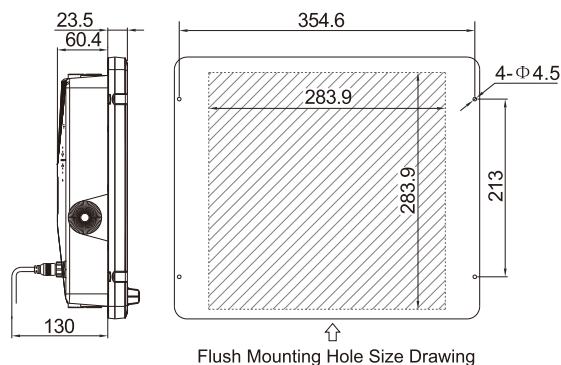
System Connection Diagram and Serial Port Definition



Main Unit Counter Mounting



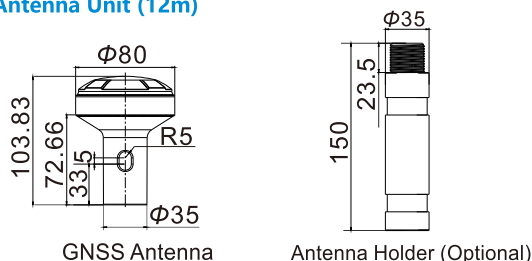
Flush Mounting



Packing List

Name	Quantity	Name	Quantity
Display	1	Rubber Gasket For M8 Knob	2
Bracket	1	4.2*20 Screw	4
Power Cable (2m)	1	Remote Control	1
8-Pin Data Cable (1.2m)	1	Remote Control Bracket	1
6-Pin Data Cable (1.2m)	1	4.8*20 Screw	4
GNSS Antenna(12m)	1	Quick Reference	1
M8 Knob	2		

GNSS Antenna Unit (12m)



Dealer:



WWW.XINUO.COM

Xinuo Information Technology (Xiamen) Corporation Limited